

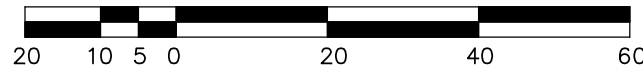
# SUBDIVISION PLAN OF PART OF LOT 1, SECTION 9, RANGE 6, CEDAR DISTRICT, PLAN 24395

PLAN EPP14109

BCGS 92G.002

THE INTENDED PLOT SIZE OF THIS PLAN IS  
560 mm IN WIDTH BY 432 mm IN HEIGHT (C-SIZE)  
WHEN PLOTTED AT A SCALE OF 1:1000

SCALE 1:1000



ALL DISTANCES ARE IN METRES UNLESS OTHERWISE NOTED

## LEGEND

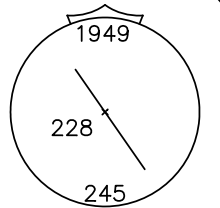
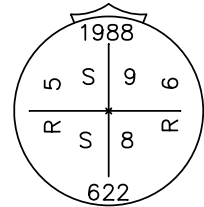
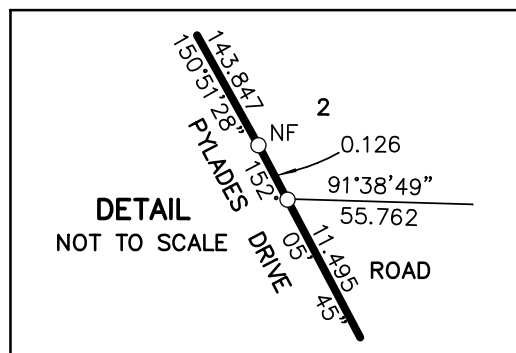
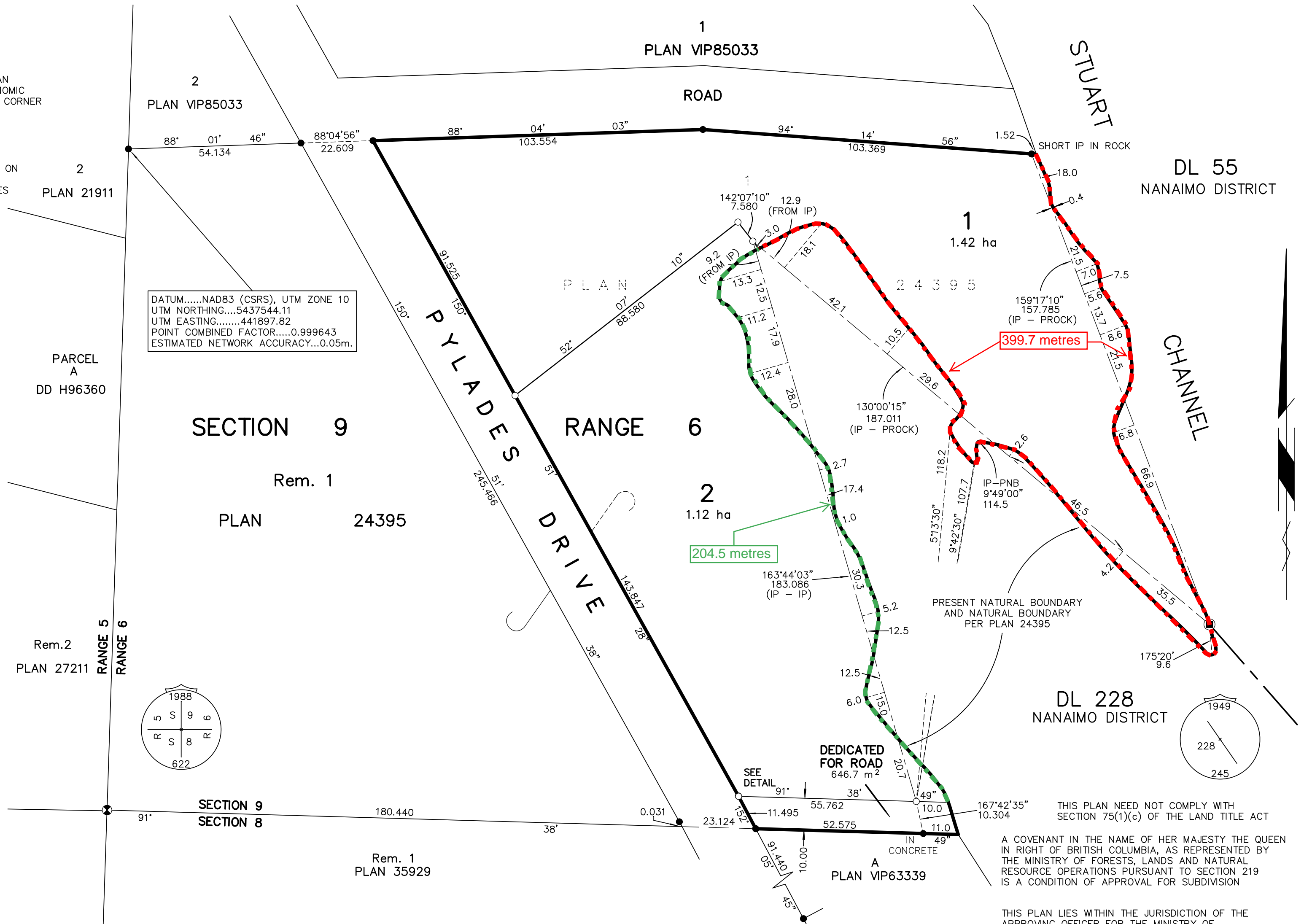
GRID BEARINGS ARE DERIVED FROM DIFFERENTIAL CARRIER PHASE  
GPS OBSERVATIONS AND ARE REFERRED TO THE CENTRAL MERIDIAN  
OF UTM ZONE 10 (123° W. LONGITUDE). TO OBTAIN LOCAL ASTRONOMIC  
BEARINGS REFERRED TO THE MERIDIAN THROUGH THE NORTHWEST CORNER  
OF REMAINDER LOT 1, PLAN 24395, SUBTRACT 0° 36' 05".

THE UTM COORDINATES AND ESTIMATED NETWORK HORIZONTAL  
ACCURACY ARE DERIVED FROM GPS DUAL FREQUENCY BASELINE  
TIES TO CANADIAN ACTIVE CONTROL STA. 'NANO', GCM 816868

THIS PLAN SHOWS HORIZONTAL GROUND-LEVEL DISTANCES BASED ON  
A MEAN ELLIPSOIDAL ELEVATION OF -15.25 METRES.  
TO COMPUTE GRID DISTANCES, MULTIPLY GROUND-LEVEL DISTANCES  
BY THE MEAN COMBINED FACTOR OF 0.99964386

- DENOTES STANDARD IRON POST FOUND
- DENOTES STANDARD IRON POST SET
- ⊙ DENOTES STANDARD CAPPED POST FOUND
- DENOTES STANDARD ROCK POST FOUND

DATUM.....NAD83 (CSRS), UTM ZONE 10  
UTM NORTHING.....5437544.11  
UTM EASTING.....441897.82  
POINT COMBINED FACTOR.....0.999643  
ESTIMATED NETWORK ACCURACY...0.05m.



THIS PLAN NEED NOT COMPLY WITH SECTION 75(1)(c) OF THE LAND TITLE ACT

A COVENANT IN THE NAME OF HER MAJESTY THE QUEEN  
IN RIGHT OF BRITISH COLUMBIA, AS REPRESENTED BY  
THE MINISTRY OF FORESTS, LANDS AND NATURAL  
RESOURCE OPERATIONS PURSUANT TO SECTION 219  
IS A CONDITION OF APPROVAL FOR SUBDIVISION

THIS PLAN LIES WITHIN THE JURISDICTION OF THE  
APPROVING OFFICER FOR THE MINISTRY OF  
TRANSPORTATION AND INFRASTRUCTURE

THIS PLAN LIES WITHIN THE REGIONAL DISTRICT OF NANAIMO  
THE FIELD SURVEY REPRESENTED BY THIS PLAN WAS  
COMPLETED BY MICHAEL JAMES TAYLOR, BCLS, CLS  
ON THE 19th DAY OF JULY, 2011.